



# INDOFINE Chemical Company, Inc.

121 Stryker Lane, Bldg. 30, Suite 1 • Hillsborough, NJ 08844 • U.S.A.

Phone: (908) 359-6778 • FAX: (908) 359-1179

website: [www.indofinechemical.com](http://www.indofinechemical.com)

e-mail: [chemical@indofinechemical.com](mailto:chemical@indofinechemical.com)

## CERTIFICATE OF ANALYSIS

Catalog Number: D-260

Product Name: **5,4'-DIMETHOXYFLAVONE**

Lot Number: 96013

Chemical Formula: C<sub>17</sub>H<sub>14</sub>O<sub>4</sub>

Molecular Weight: 282.30

Melting Point: 161-162°C

Appearance: Off white powder

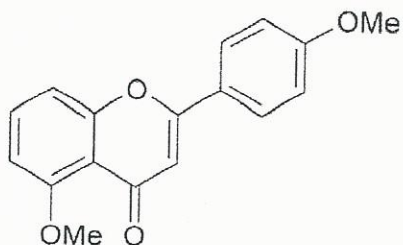
Solubility: Soluble in Chloroform

TLC: Chloroform:Methanol (9.5:0.5)

NMR Spectrum: Enclosed (conforms to the structure)

Storage: Store in a cool, dry place

Purity(HPLC): 99.58%





# INDOFINE Chemical Company, Inc.

121 Stryker Lane, Bldg. 30, Suite 1 • Hillsborough, NJ 08844 • U.S.A.

Phone: (908) 359-6778 • FAX: (908) 359-1179

website: [www.indofinechemical.com](http://www.indofinechemical.com)

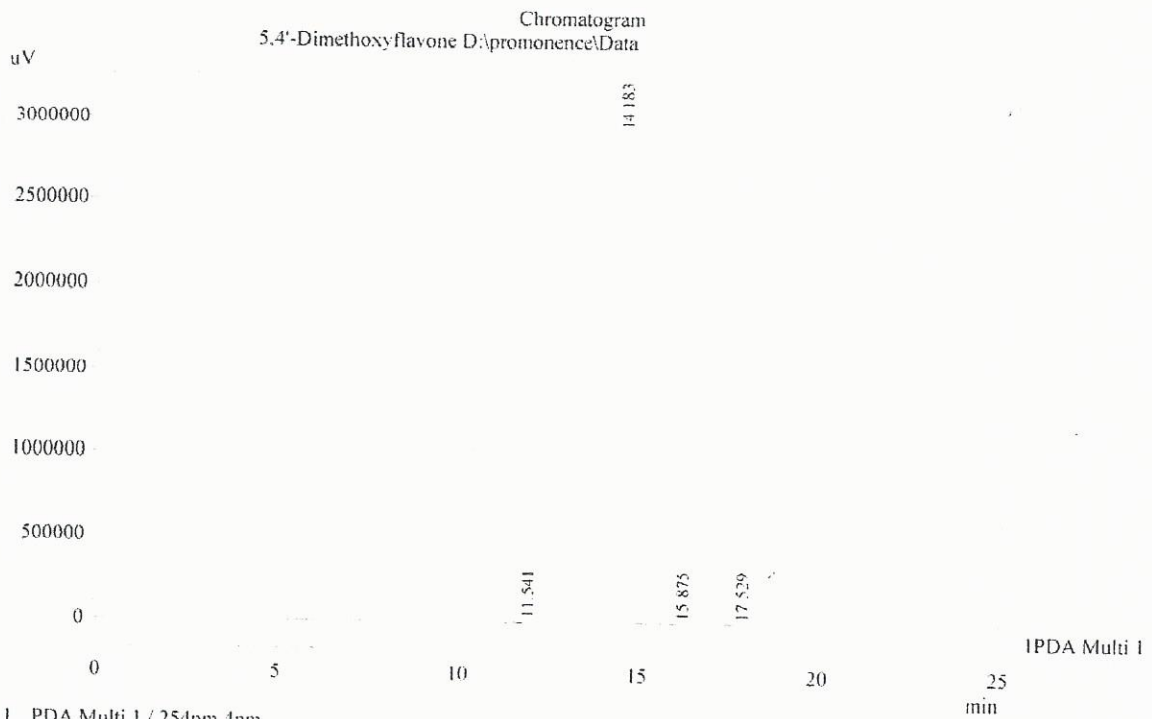
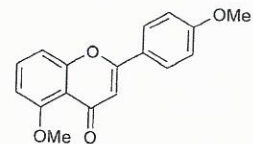
e-mail: [chemical@indofinechemical.com](mailto:chemical@indofinechemical.com)

## HPLC ANALYSIS

Acquired by : Admin  
 Sample Name : 5,4'-Dimethoxyflavone  
 Sample ID : Lot No:96013  
 Injection Volume : 20 ul  
 Data Filename : 301015D.lcd  
 Method Filename : Linear Gradient.M.lcm

Catalog No.: D-260  
 Product Name: 5,4'-Dimethoxyflavone  
 Lot No.: 96013

Column : Gemini C-18(2), (250mm x4.6mm 5.0µ)  
 Flow : 1.000 mL/min.  
 Mobile Phase : A(0.05% TFA in water) B( Acetonitrile)  
 0.01 90 10  
 12.0 10 90  
 20.0 10 90  
 23.0 90 10  
 25.0 90 10



1 PDA Multi 1 / 254nm 4nm

PDA Ch1 254nm 4nm

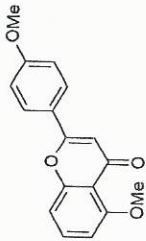
PeakTable

| Peak# | Name                  | Ret. Time | Area     | Area % | Relative Retention Time |
|-------|-----------------------|-----------|----------|--------|-------------------------|
| 1     | RT:11.541             | 11.541    | 70942    | 0.27   | 0.81                    |
| 2     | 5,4'-Dimethoxyflavone | 14.183    | 26033541 | 99.58  | 1.00                    |
| 3     | RT:15.875             | 15.875    | 24384    | 0.09   | 1.12                    |
| 4     | RT:17.529             | 17.529    | 14644    | 0.06   | 1.24                    |
| Total |                       |           | 26143511 | 100.00 |                         |



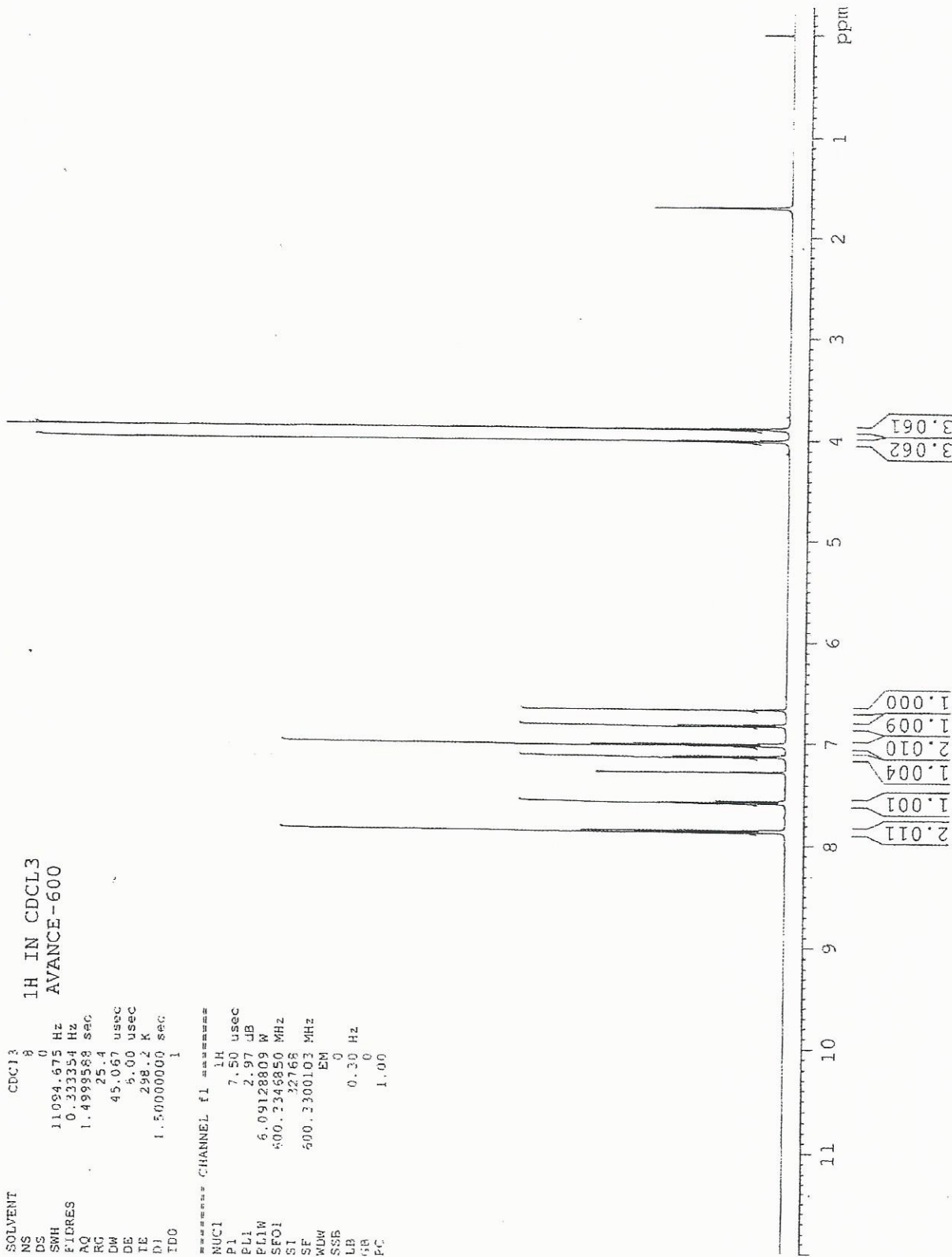
**INDOFINE Chemical Company, Inc.**  
 121 STRYKER LANE  
 BLDG. 30, SUITE 1  
 HILLSBOROUGH, NJ 08844

Catalog No.: D-260  
 Product Name: 5,4'-Dimethoxyflavone  
 Lot No.: 96013



SOLVENT CDC13  
 NS 0  
 DS 0  
 SWH 11094.675 Hz  
 FIDRES 0.333354 Hz  
 AQ 1.4993588 sec  
 RG 25.4  
 DW 45.067 usec  
 DE 5.00 usec  
 TE 298.2 K  
 DJ 1.5000000 sec  
 TD0 1

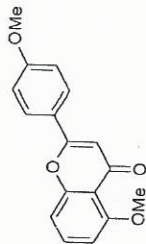
\*\*\*\*\* CHANNEL f1 \*\*\*\*\*  
 NUC1 1H  
 P1 7.50 usec  
 PL1 2.97 dB  
 PL1W 6.09128809 W  
 SFO1 500.1345850 MHz  
 SI 32765  
 SF 500.1300103 MHz  
 MW EM  
 SSB 0  
 LB 0.30 Hz  
 GB 0  
 PC 1.00





**INDOFINE Chemical Company, Inc.**  
 121 STRYKER LANE  
 BLDG. 30, SUITE 1  
 HILLSBOROUGH, NJ 08844

Catalog No.: D-260  
 Product Name: 5,4'-Dimethoxyflavone  
 Lot No.: 96013



SOLVENT CDCL3  
 NS 8  
 DS 0  
 SWH 11094.675 Hz  
 FIDRES 0.333354 Hz  
 AQ 1.4993568 sec  
 RG 25.4  
 DW 45.067 usec  
 DE 5.00 usec  
 TE 298.2 K  
 D1 1.5000000 sec  
 TD0 1

1H IN CDCL3  
 AVANCE-600

==== CHANNEL F1 =====  
 NUC1 1H  
 P1 7.50 usec  
 PL1 2.97 dB  
 PL1W 6.09128809 W  
 SFO1 600.3346850 MHz  
 ST 327.08  
 SF 600.3309103 MHz  
 RDW EM  
 SSB 0  
 LB 0  
 GB 0  
 PC 1.00

